

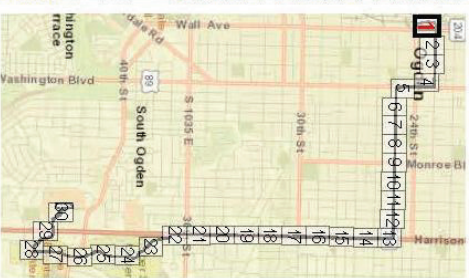
**Table 2. Historic Properties – Findings of *No Adverse Effect/De Minimis Use***

Address or Site Number	Description	Nature of Impact	Section 4(f) Use
1183 E. 28th St.	c. 1924 1-story Bungalow single-family dwelling exhibiting Bungalow and Prairie School styles	New station platform and shelter placed outside the east (side yard) parcel boundary of this property. Eligible building is located approximately 24 feet from edge of new platform. Building setting would not be compromised from most public views, including the sidewalk adjacent to the structure. Primary view of the front of the building would not be affected.	<i>De minimis use</i>
1196 E. 30th St.	c. 1942 1-story Other Residential type building converted to commercial use and exhibiting Minimal Traditional style	New station platform and shelter placed just outside parcel boundary of an adjacent property. Eligible building is located approximately 40 feet from edge of new platform. Building setting would not be compromised from most public views, including the sidewalk in front of the property.	<i>De minimis use</i>
2415/2439 S. Washington Blvd.	Peery's Egyptian Theater; c. 1924 2-story 1-part Block building exhibiting Egyptian Revival style	New station platform and shelter placed outside east edge (frontage) of parcel but within typical public view of the building's primary façade. The nearest part of the building would be within about 10 feet of the edge of the new station shelter. The station would incorporate Egyptian-style design to ensure context sensitivity. The building's setting would not be unduly compromised.	<i>De minimis use</i>
Site 42WB000373	Ogden Rail Yard site	New station placed along east edge of site boundary within previously disturbed area.	<i>De minimis use</i>

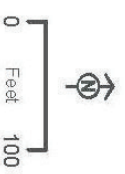
**Table 3. Historic Properties – Findings of *Adverse Effect/Section 4(f) Use***

Address or Site Number	Description	Nature of Impact	Section 4(f) Use
1341 Country Hills Dr.	c. 1954 1-story Ranch single-family dwelling exhibiting Ranch/Rambler style	Direct impact to historic building. Note that the property is <b><i>not</i></b> currently owned by Weber State University, but demolition of this property was included in the MOA between the University and SHPO.	Use

**Map Series 1 – Historic Properties (set of 30)**



- LEGEND**
- NRHP Eligible Historic Buildings**
- No Effect
  - No Adverse
  - Adverse Effect
- Archaeological Sites**
- Listed on NRHP
  - Eligible
  - Eligible
  - Ineligible
- Design Features**
- Approximate Cut/Fill Line
  - Curb and Gutter
  - Bus - Only Travel Lane
  - Mixed Flow
  - Sidewalk
  - Station Platform
  - Pavement
- Parcel Boundary**
- Eligible
  - Ineligible

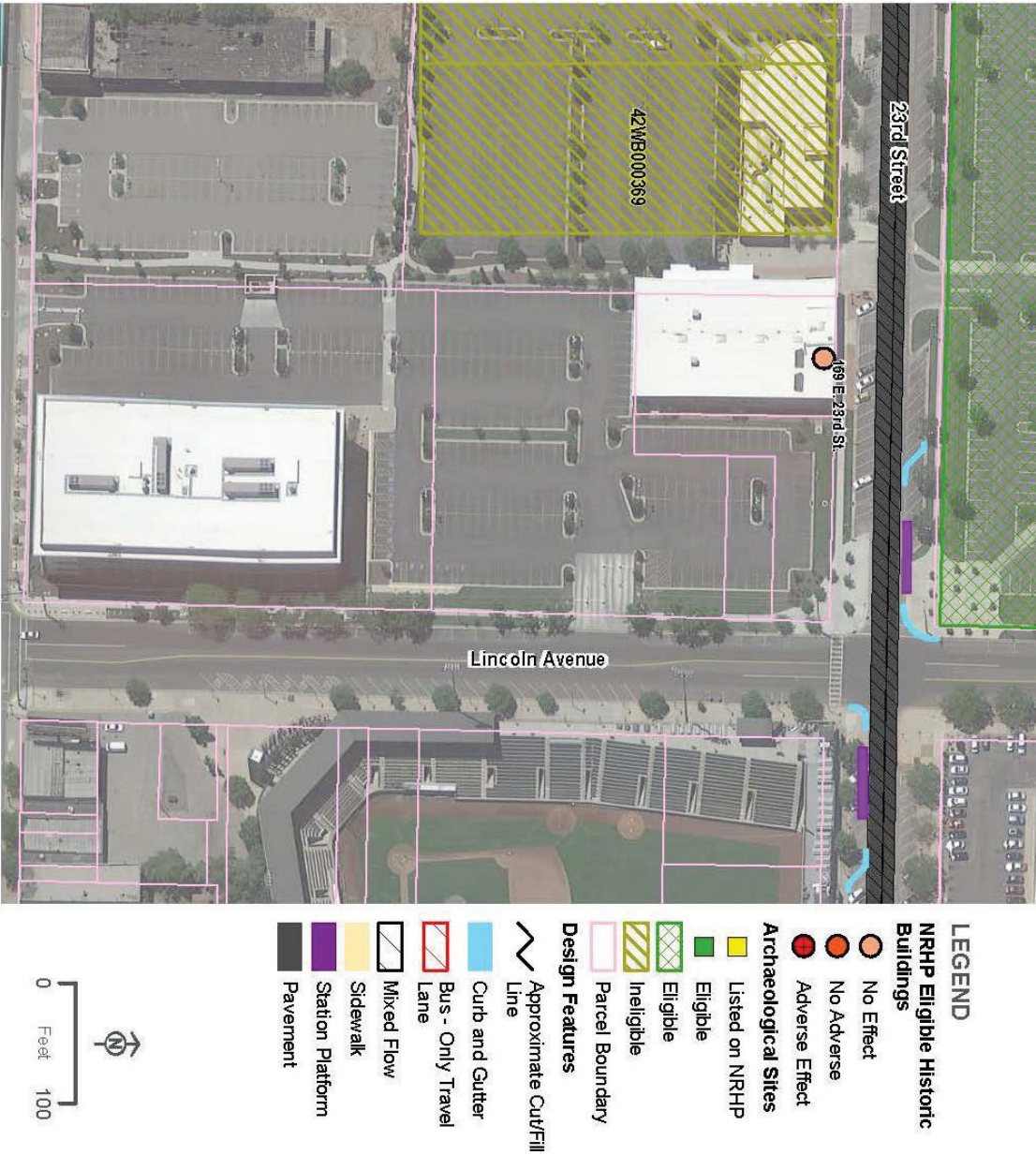


**HJR**

**OGDEN/WEBER STATE UNIVERSITY TRANSIT PROJECT  
HISTORIC PROPERTIES**

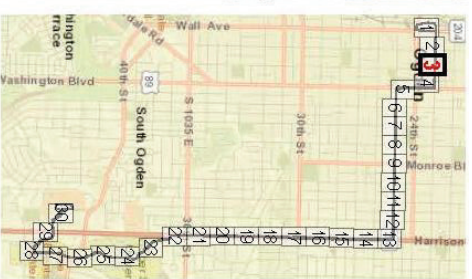
FIGURE 1 OF 30





**OGDEN/WEBER STATE UNIVERSITY TRANSIT PROJECT**  
**HISTORIC PROPERTIES**  
**FIGURE 2 OF 30**





# LEGEND

## NRHP Eligible Historic Buildings

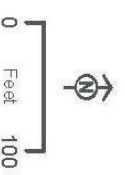
- No Effect
- No Adverse
- Adverse Effect

## Archaeological Sites

- Listed on NRHP
- Eligible
- Eligible
- Ineligible

## Design Features

- Approximate Cut/Fill Line
- Curb and Gutter
- Bus - Only Travel Lane
- Mixed Flow
- Sidewalk
- Station Platform
- Pavement

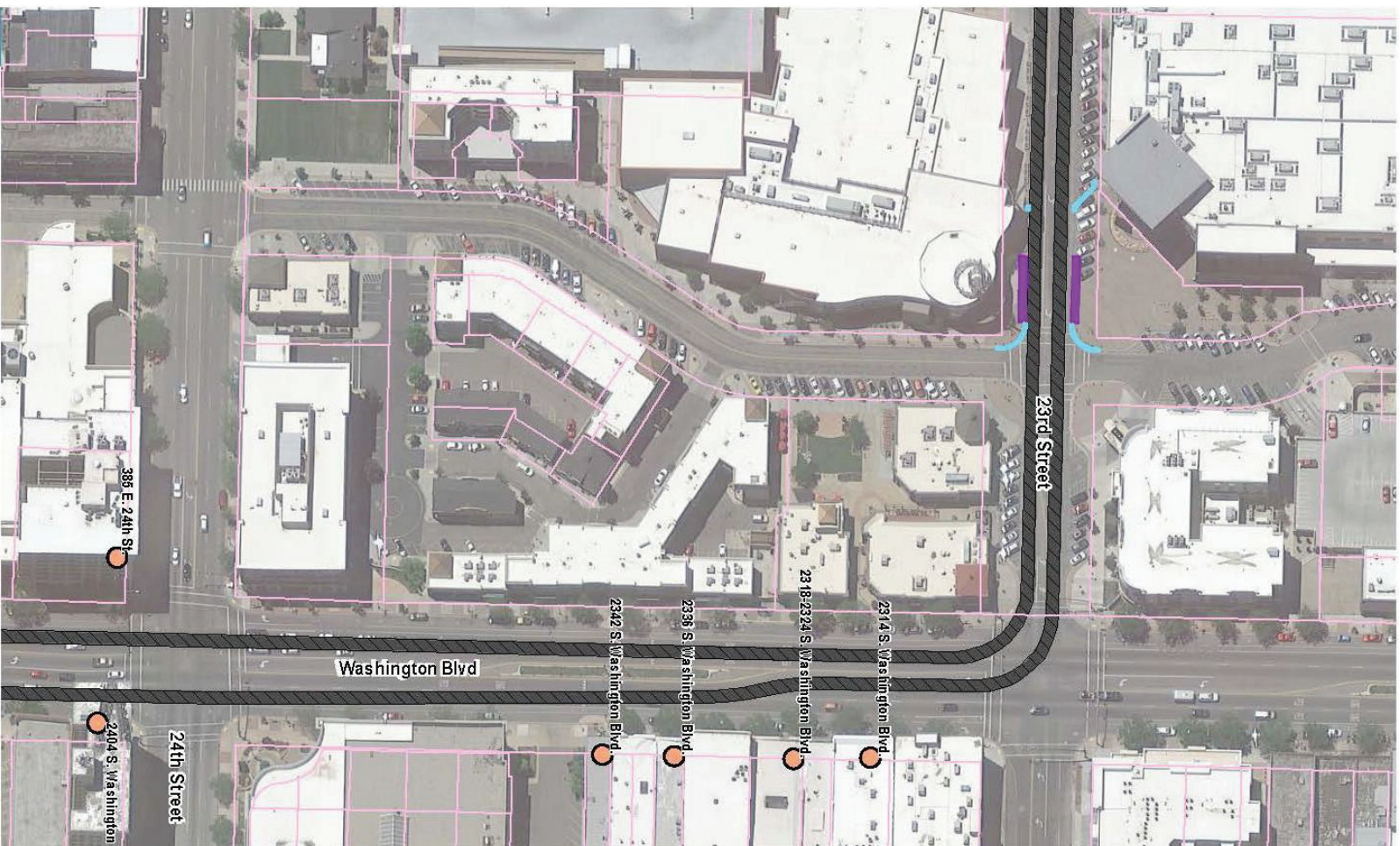
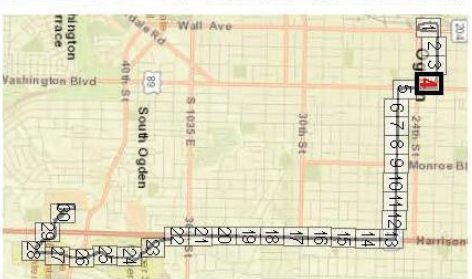


HSR

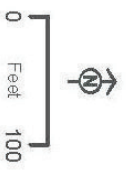
## OGDEN/WEBER STATE UNIVERSITY TRANSIT PROJECT HISTORIC PROPERTIES

FIGURE 3 OF 30

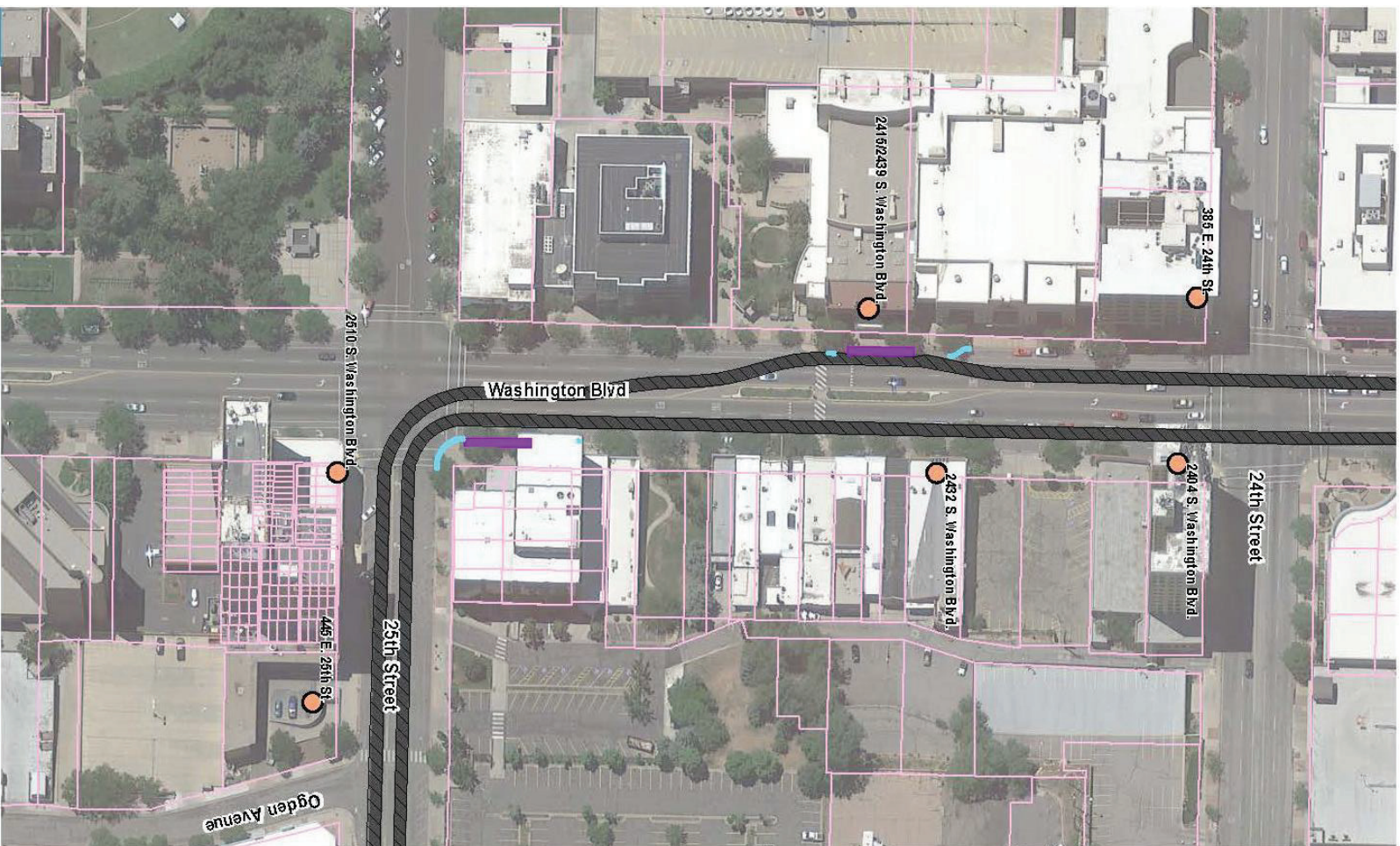
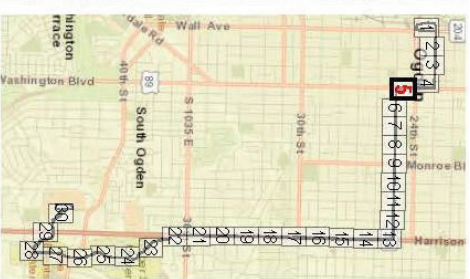




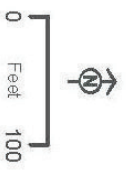
- LEGEND**
- NRHP Eligible Historic Buildings**
- No Effect
  - No Adverse
  - Adverse Effect
- Archaeological Sites**
- Listed on NRHP
  - Eligible
  - Eligible
  - Ineligible
- Design Features**
- Approximate Cut/Fill Line
  - Curb and Gutter
  - Bus - Only Travel Lane
  - Mixed Flow
  - Sidewalk
  - Station Platform
  - Pavement
- Parcel Boundary**
- Design Features**
- Approximate Cut/Fill Line
  - Curb and Gutter
  - Bus - Only Travel Lane
  - Mixed Flow
  - Sidewalk
  - Station Platform
  - Pavement



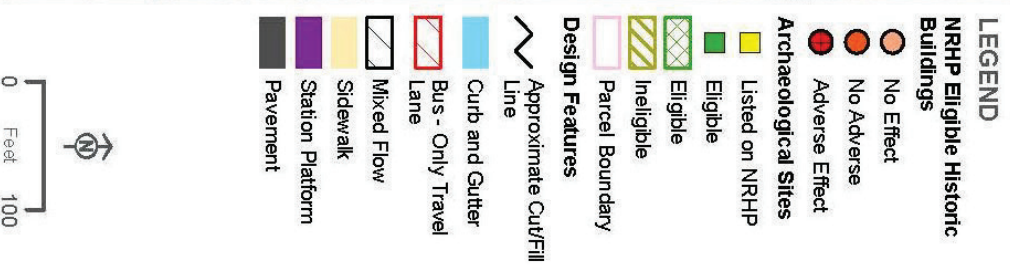
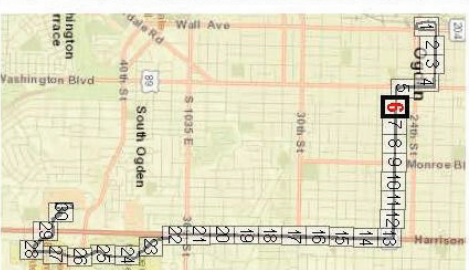




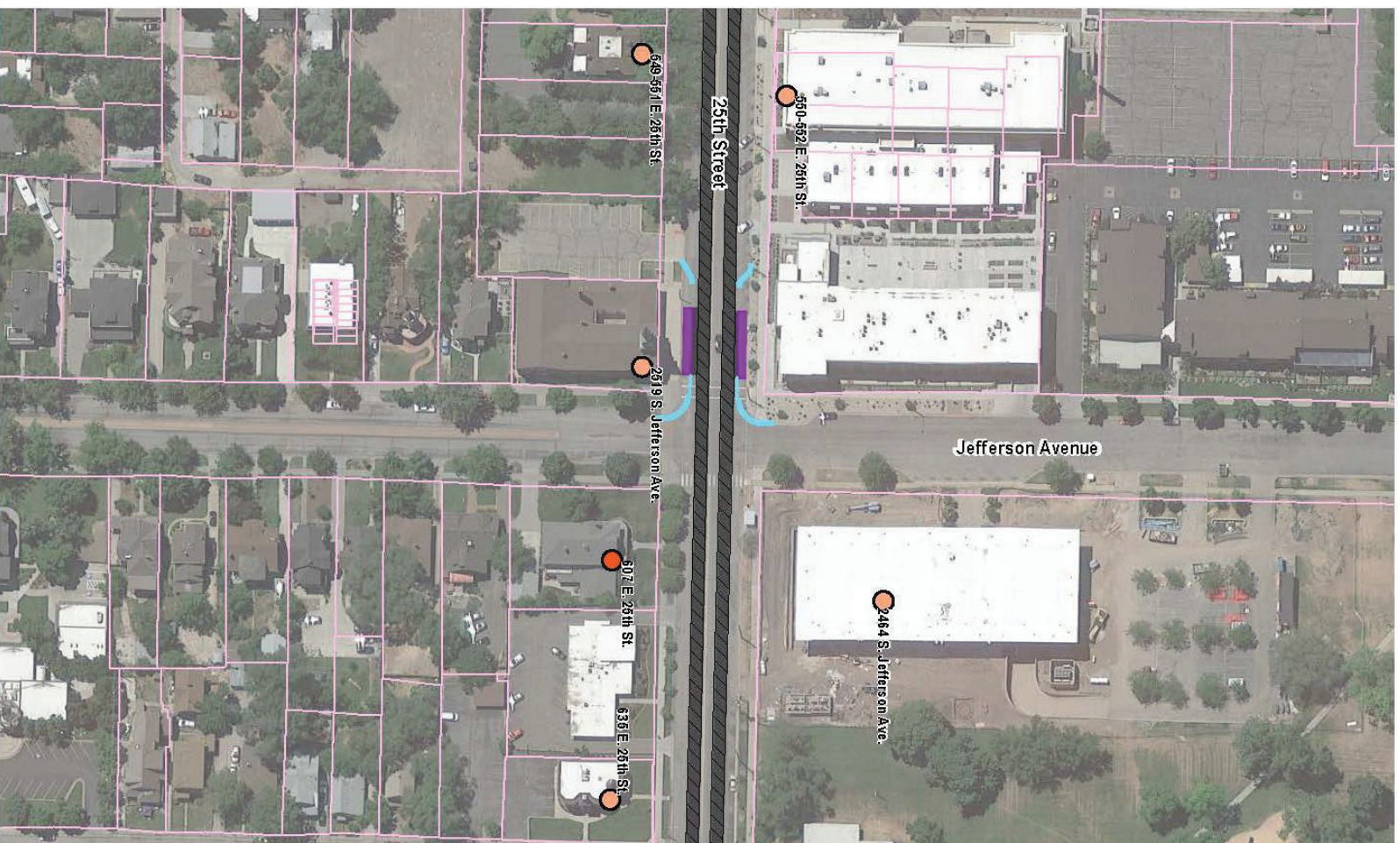
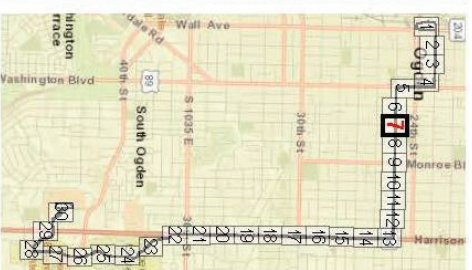
- LEGEND**
- NRHP Eligible Historic Buildings**
- No Effect
  - No Adverse
  - Adverse Effect
- Archaeological Sites**
- Listed on NRHP
  - Eligible
  - Eligible
  - Ineligible
- Design Features**
- Approximate Cut/Fill Line
  - Curb and Gutter
  - Bus - Only Travel Lane
  - Mixed Flow
  - Sidewalk
  - Station Platform
  - Pavement











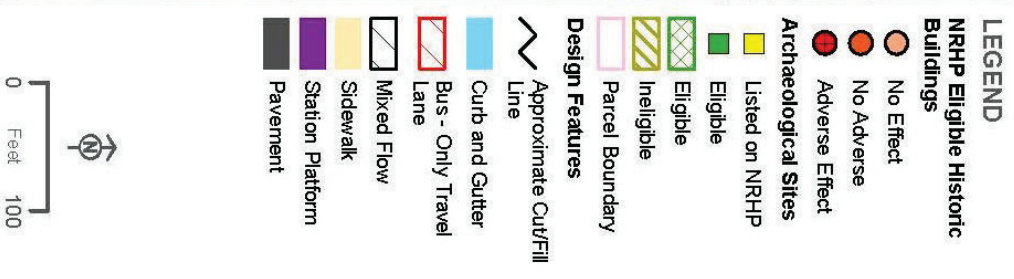
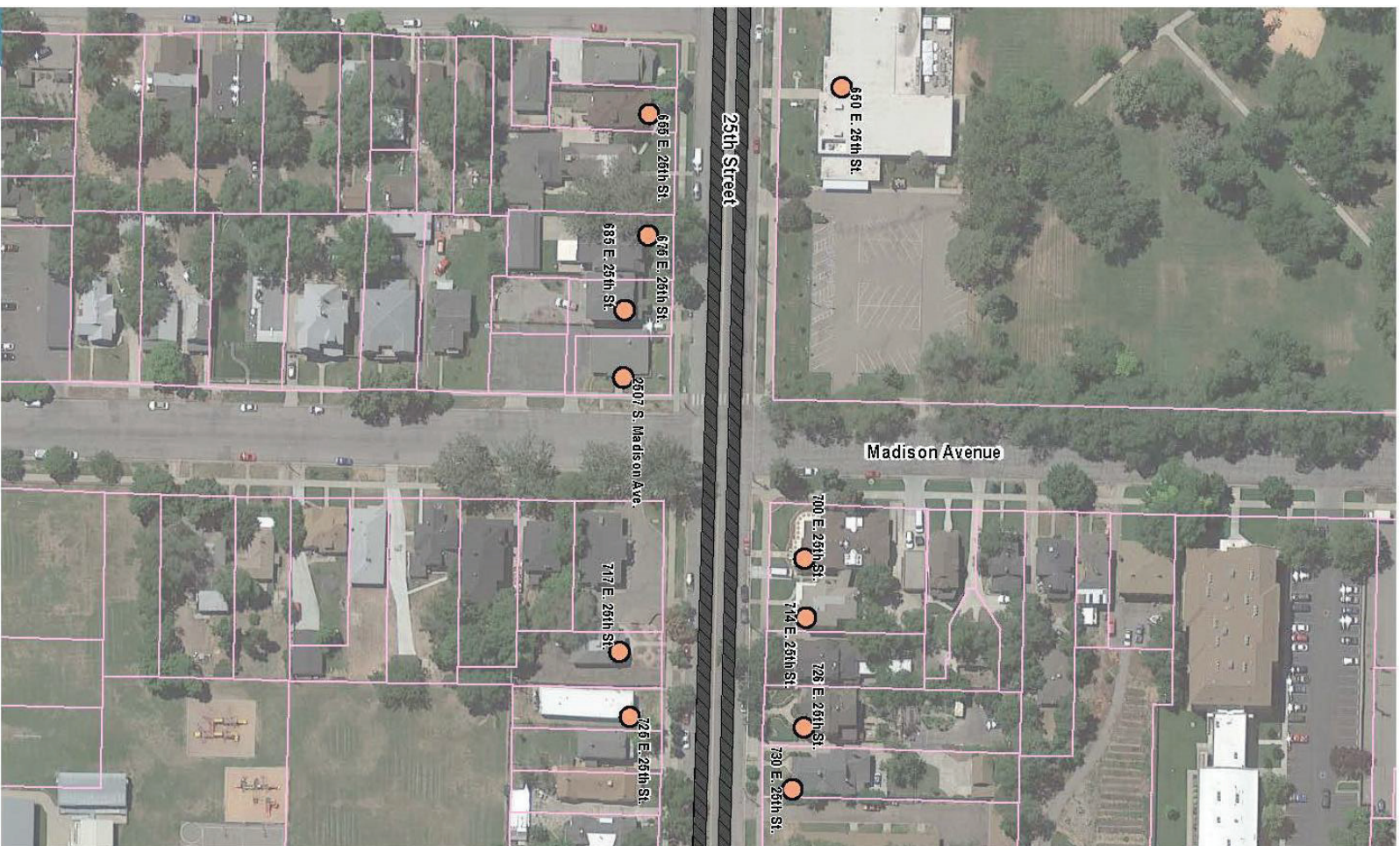
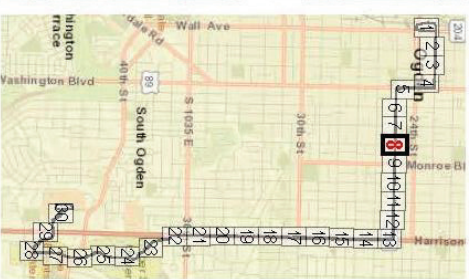
- LEGEND**
- NRHP Eligible Historic Buildings**
- No Effect
  - No Adverse
  - Adverse Effect
- Archaeological Sites**
- Listed on NRHP
  - Eligible
  - Eligible
  - Ineligible
- Design Features**
- Approximate Cut/Fill Line
  - Curb and Gutter
  - Bus - Only Travel Lane
  - Mixed Flow
  - Sidewalk
  - Station Platform
  - Pavement
- Parcel Boundary**
- Scale:** 0 Feet 100
- North Arrow:** N

HJR

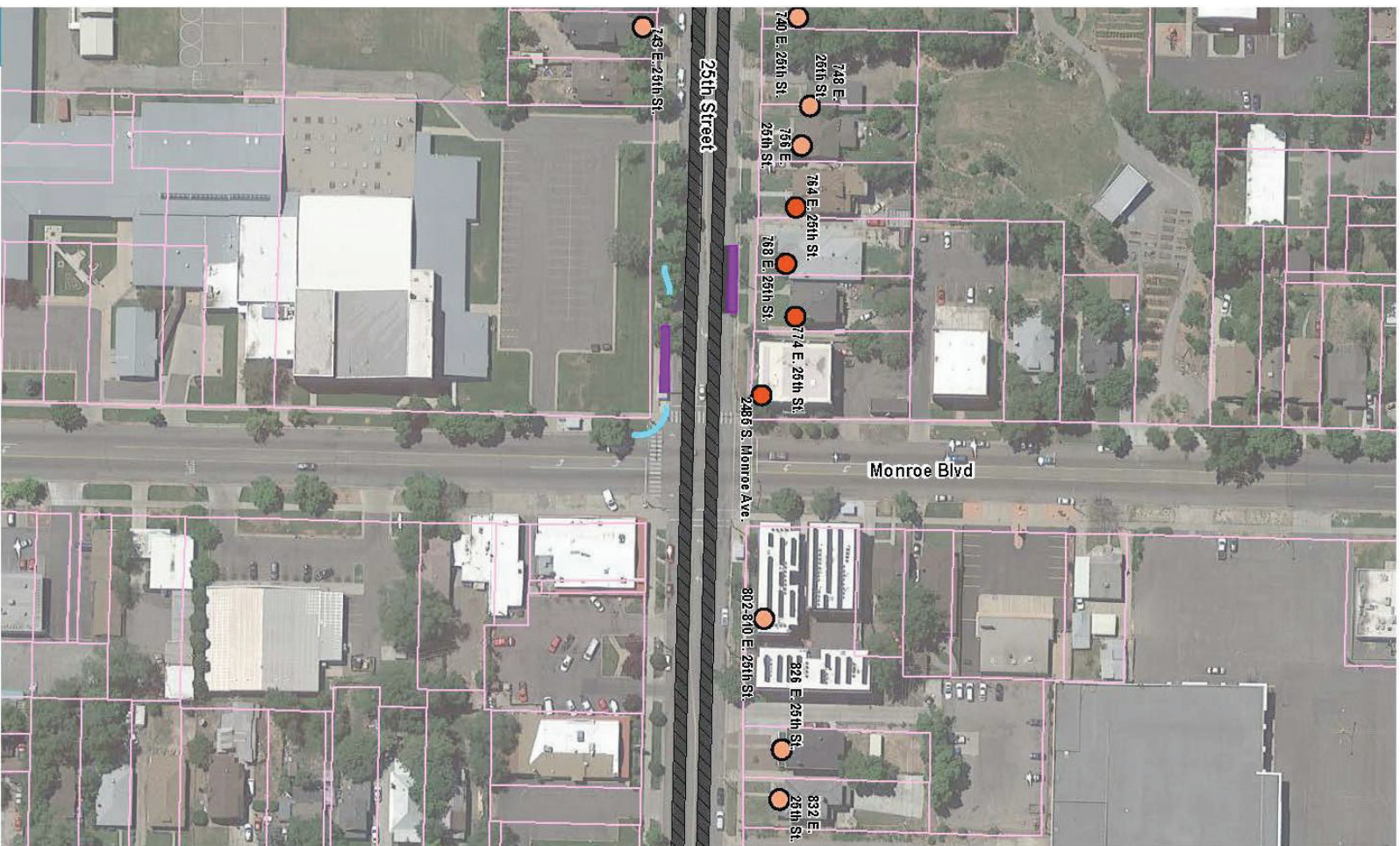
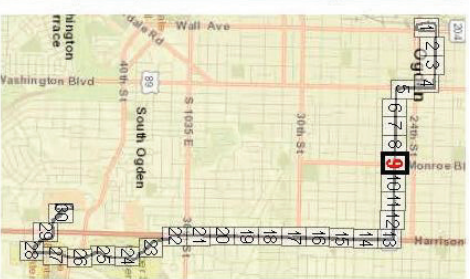
# OGDEN/WEBER STATE UNIVERSITY TRANSIT PROJECT HISTORIC PROPERTIES

FIGURE 7 OF 30

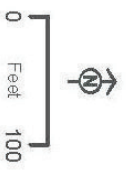




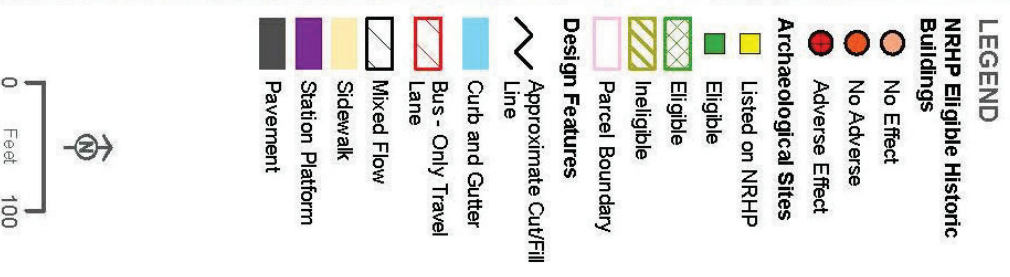
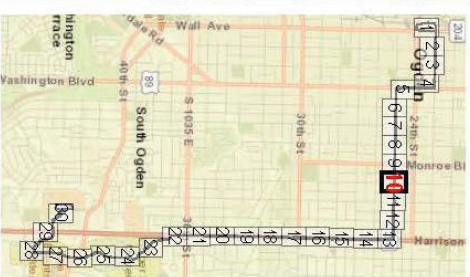




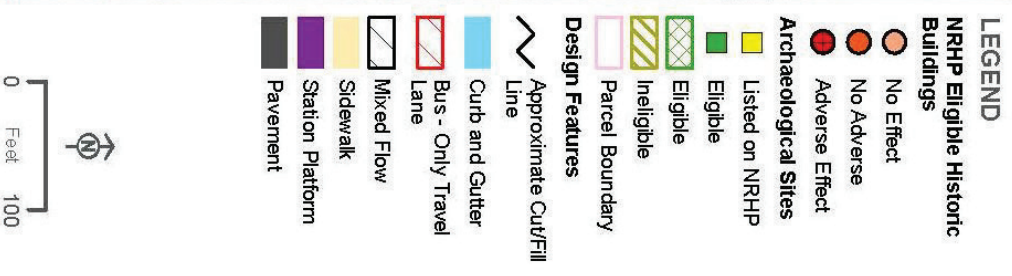
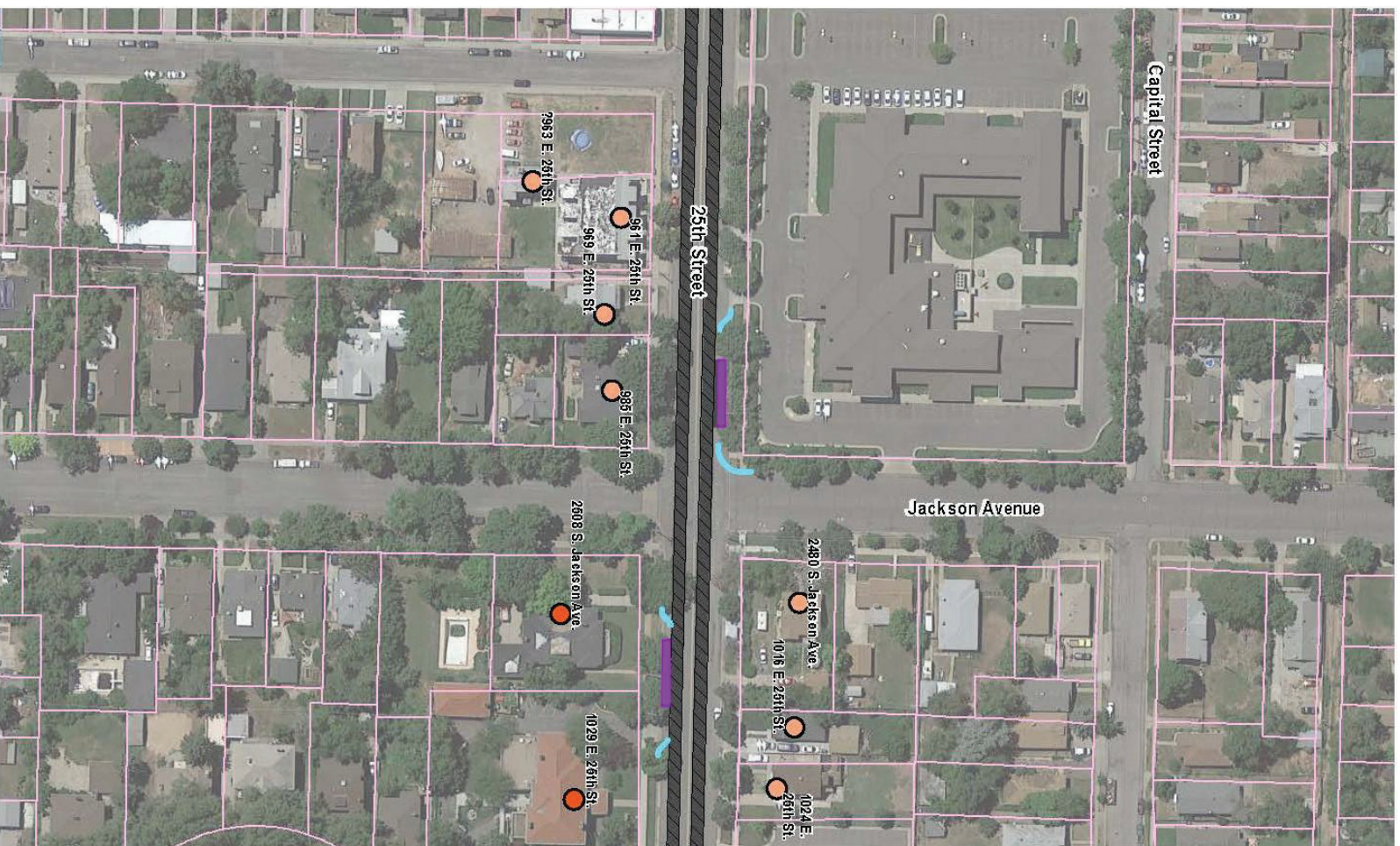
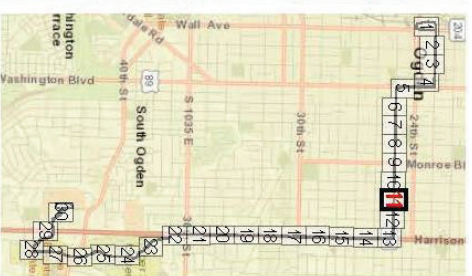
- LEGEND**
- NRHP Eligible Historic Buildings**
- No Effect
  - No Adverse
  - Adverse Effect
- Archaeological Sites**
- Listed on NRHP
  - Eligible
  - Ineligible
- Design Features**
- Approximate Cut/Fill Line
  - Curb and Gutter
  - Bus - Only Travel Lane
  - Mixed Flow
  - Sidewalk
  - Station Platform
  - Pavement



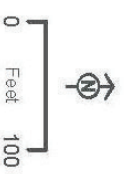
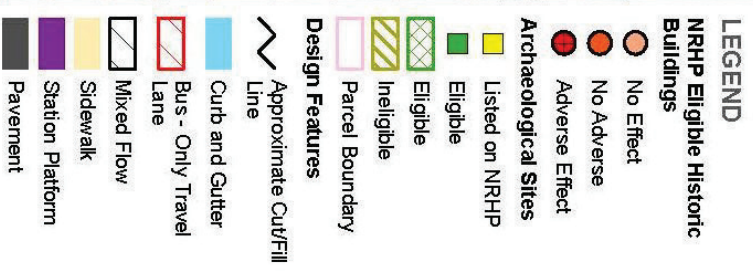
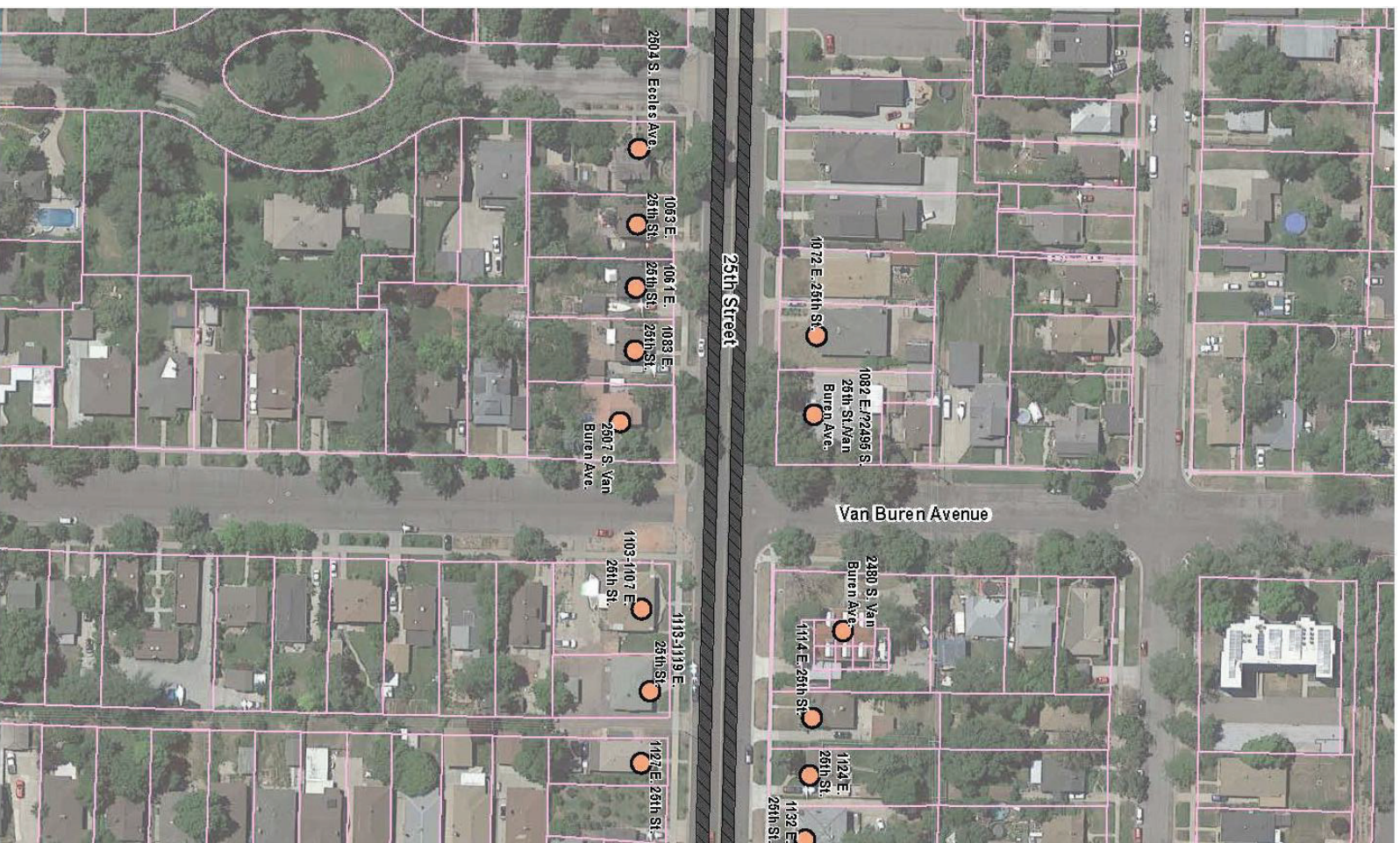
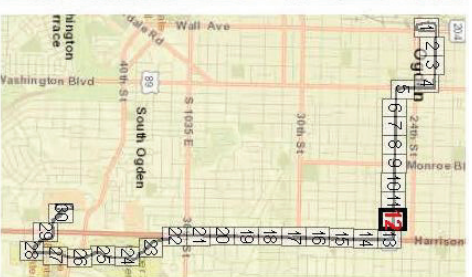








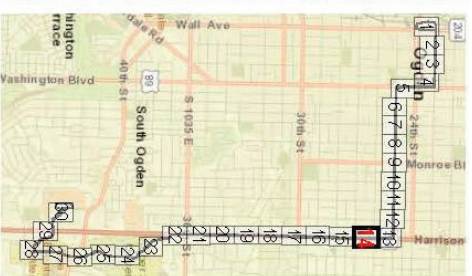




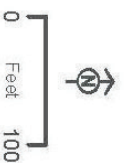








- LEGEND**
- NRHP Eligible Historic Buildings**
- No Effect
  - No Adverse
  - Adverse Effect
- Archaeological Sites**
- Listed on NRHP
  - Eligible
  - Eligible
  - Ineligible
- Design Features**
- Approximate Cut/Fill Line
  - Curb and Gutter
  - Bus - Only Travel Lane
  - Mixed Flow
  - Sidewalk
  - Station Platform
  - Pavement

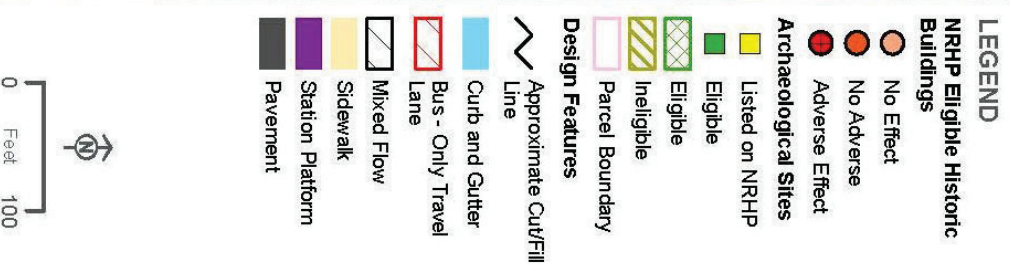
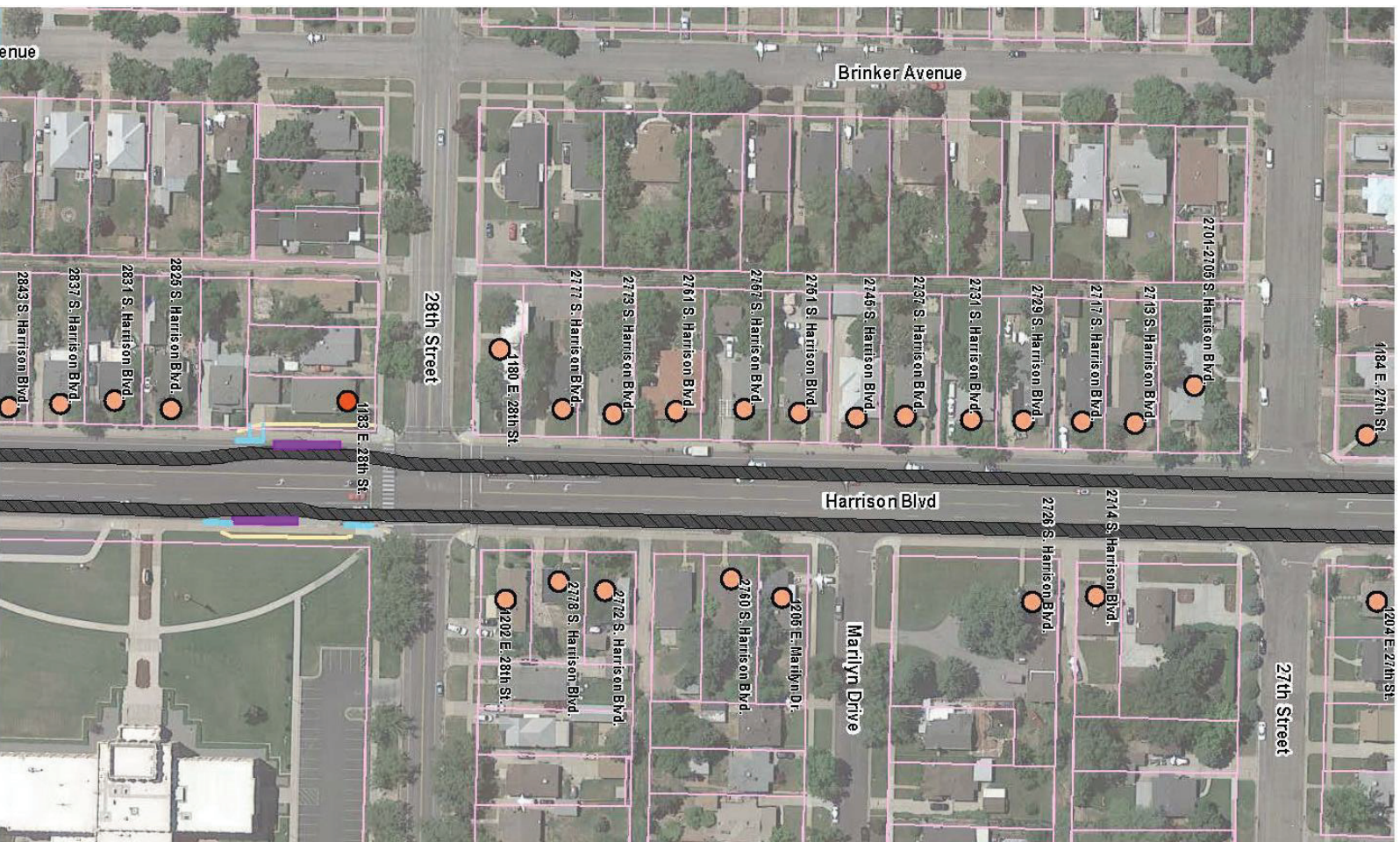
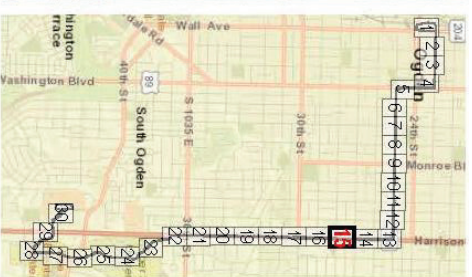


**HJR**

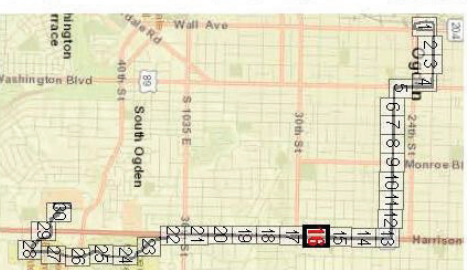
**OGDENWEBER STATE UNIVERSITY TRANSIT PROJECT  
HISTORIC PROPERTIES**

FIGURE 14 OF 30









# LEGEND

## NRHP Eligible Historic Buildings

- No Effect
- No Adverse
- Adverse Effect

## Archaeological Sites

- Listed on NRHP
- Eligible
- Ineligible

## Design Features

- Approximate Cut/Fill Line
- Curb and Gutter
- Bus - Only Travel Lane
- Mixed Flow
- Sidewalk
- Station Platform
- Pavement

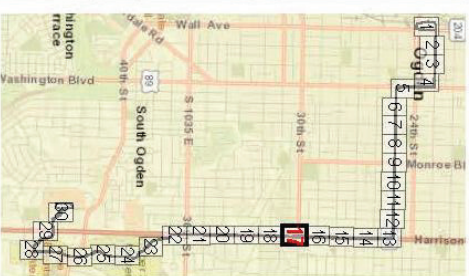


HSR

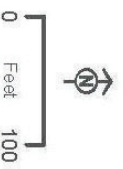
## OGDEN/WEBER STATE UNIVERSITY TRANSIT PROJECT HISTORIC PROPERTIES

FIGURE 16 OF 30





- LEGEND**
- NRHP Eligible Historic Buildings**
- No Effect
  - No Adverse
  - Adverse Effect
- Archaeological Sites**
- Listed on NRHP
  - Eligible
  - Eligible
  - Ineligible
- Design Features**
- Approximate Cut/Fill Line
  - Curb and Gutter
  - Bus - Only Travel Lane
  - Mixed Flow
  - Sidewalk
  - Station Platform
  - Pavement

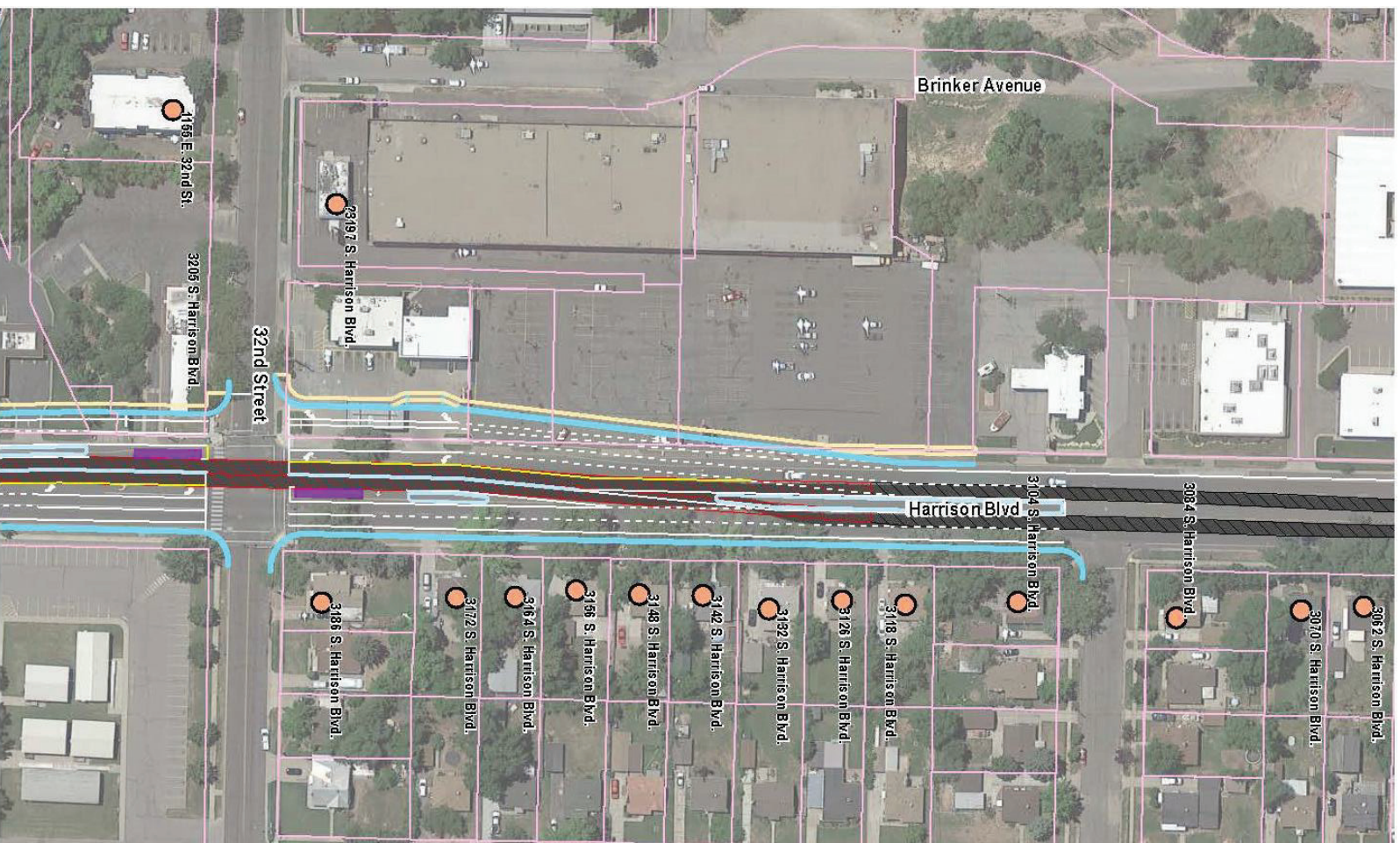
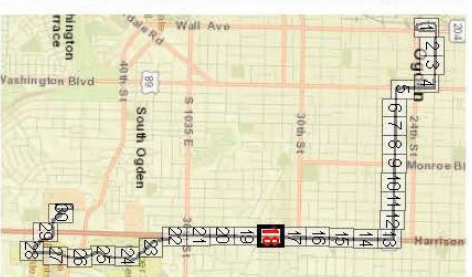


**HJR**

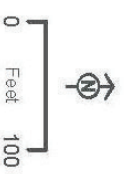
**OGDEN/WEBER STATE UNIVERSITY TRANSIT PROJECT  
HISTORIC PROPERTIES**

FIGURE 17 OF 30

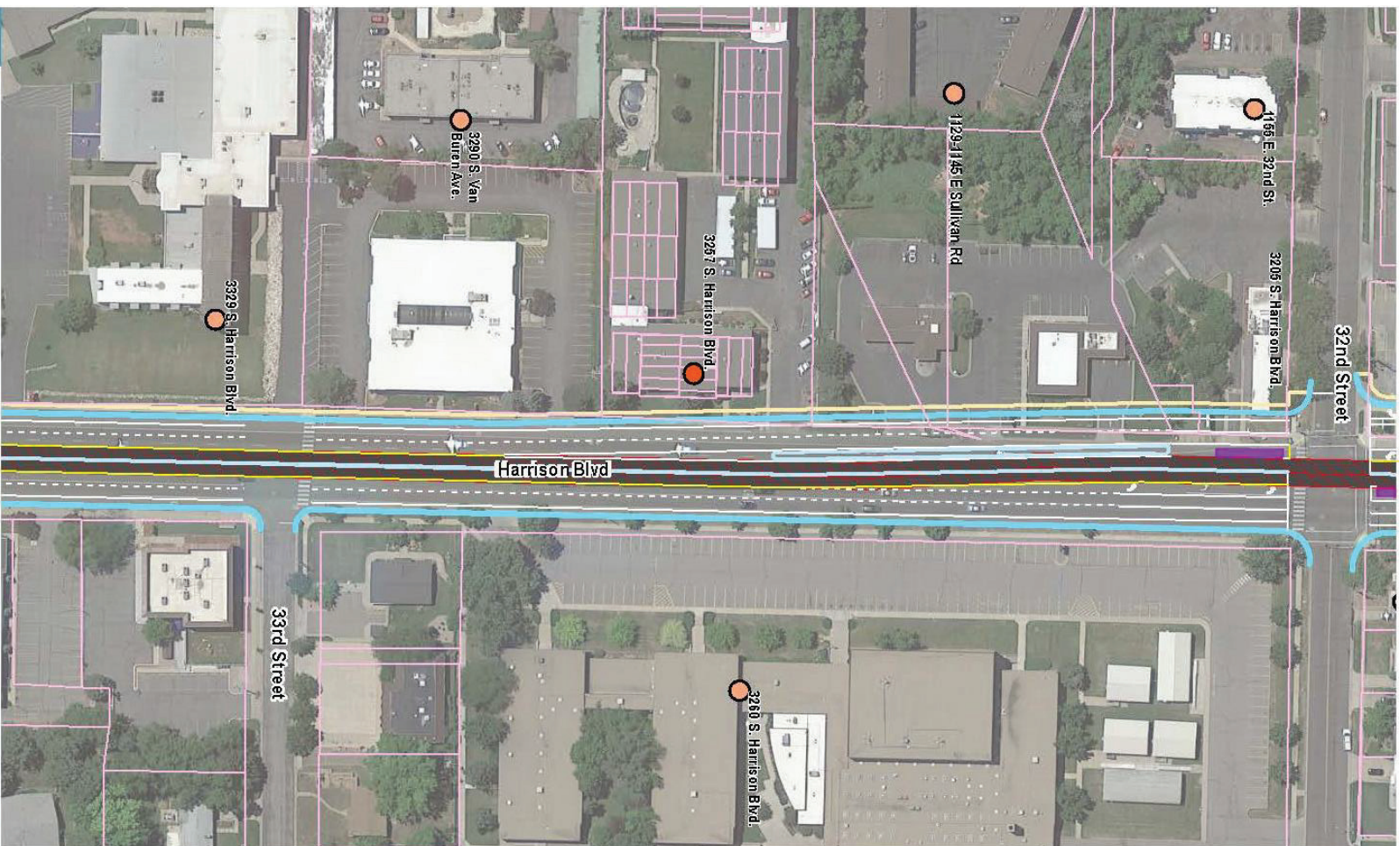
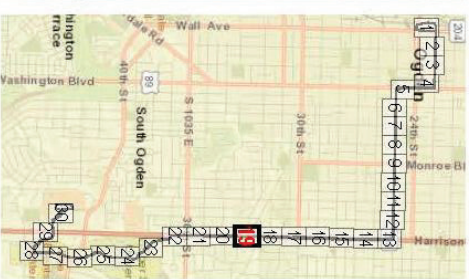




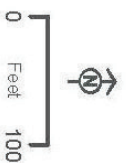
- LEGEND**
- NRHP Eligible Historic Buildings**
- No Effect
  - No Adverse
  - Adverse Effect
- Archaeological Sites**
- Listed on NRHP
  - Eligible
  - Eligible
  - Ineligible
- Design Features**
- Approximate Cut/Fill Line
  - Curb and Gutter
  - Bus - Only Travel Lane
  - Mixed Flow
  - Sidewalk
  - Station Platform
  - Pavement



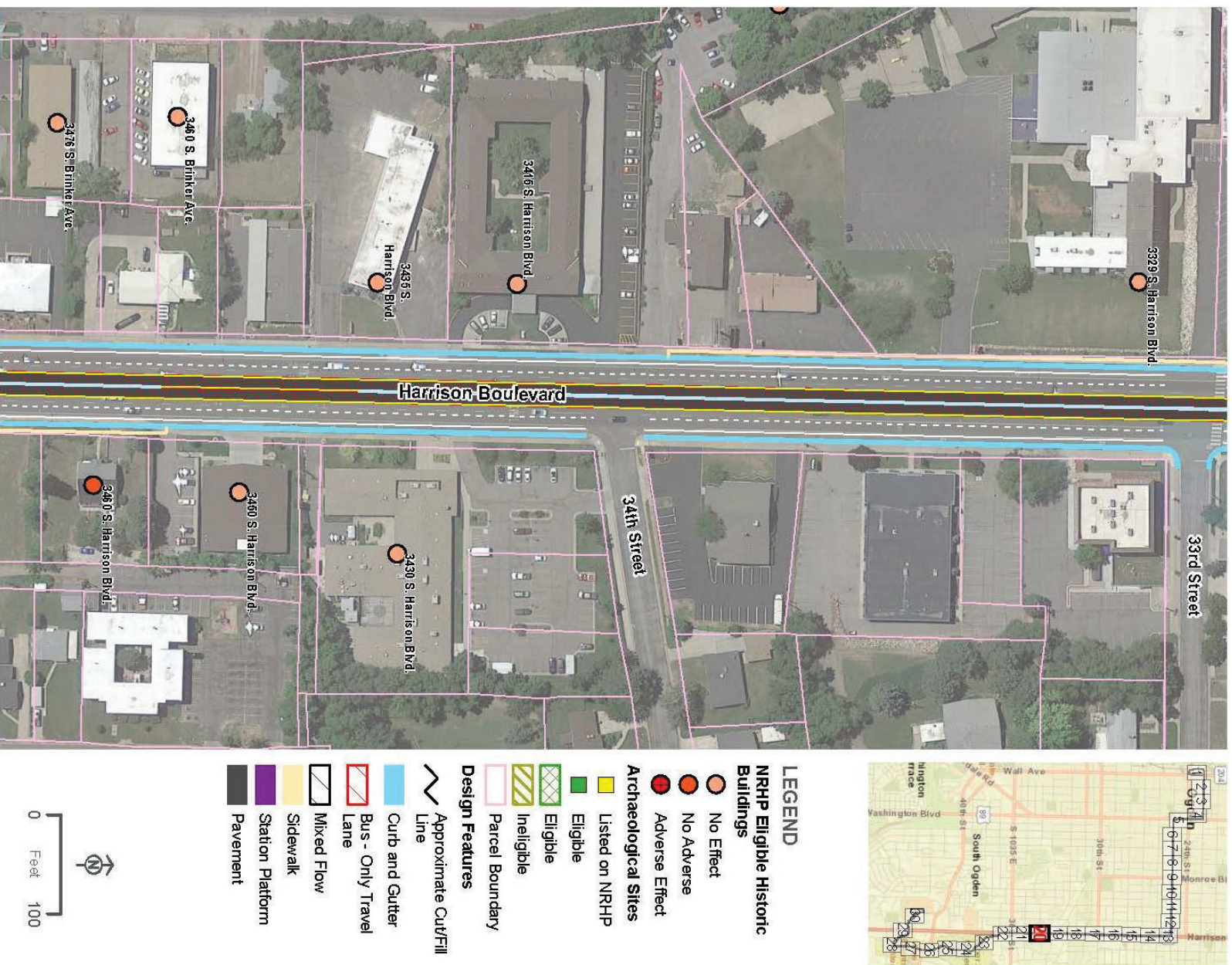
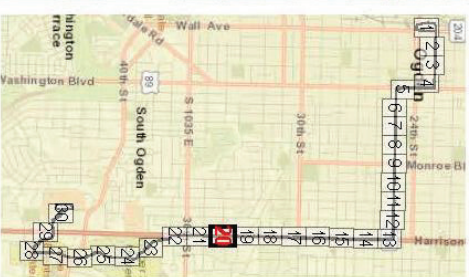




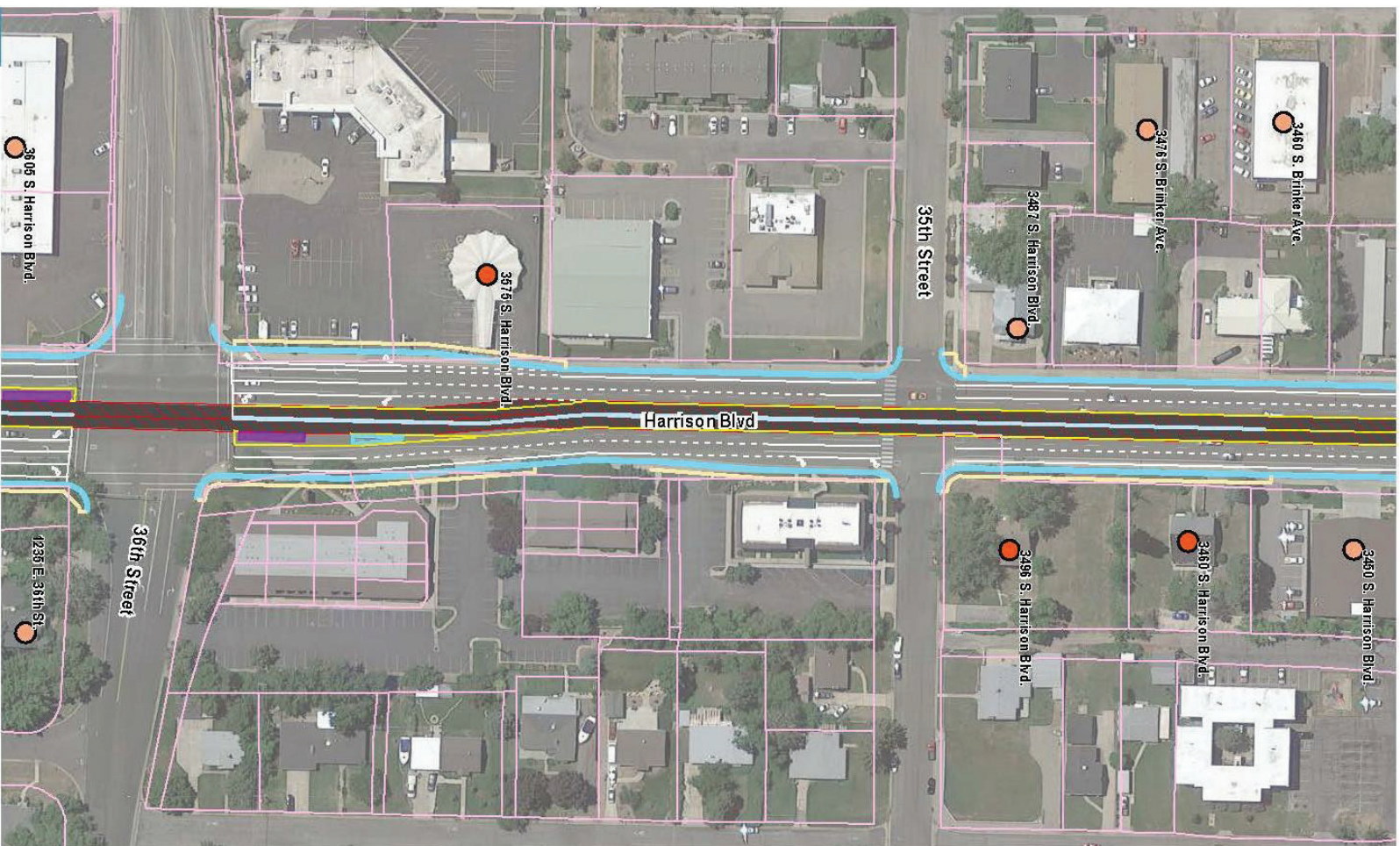
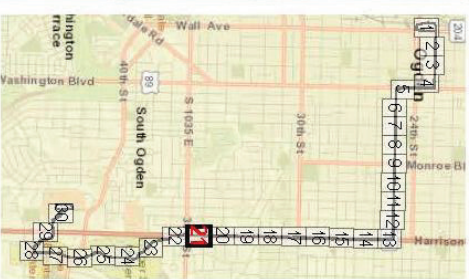
- LEGEND**
- NRHP Eligible Historic Buildings**
- No Effect
  - No Adverse
  - Adverse Effect
- Archaeological Sites**
- Listed on NRHP
  - Eligible
  - Eligible
  - Ineligible
- Design Features**
- Approximate Cut/Fill Line
  - Curb and Gutter
  - Bus - Only Travel Lane
  - Mixed Flow
  - Sidewalk
  - Station Platform
  - Pavement



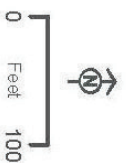




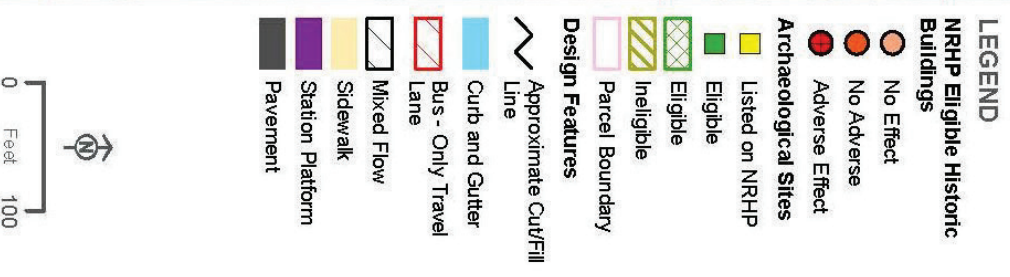
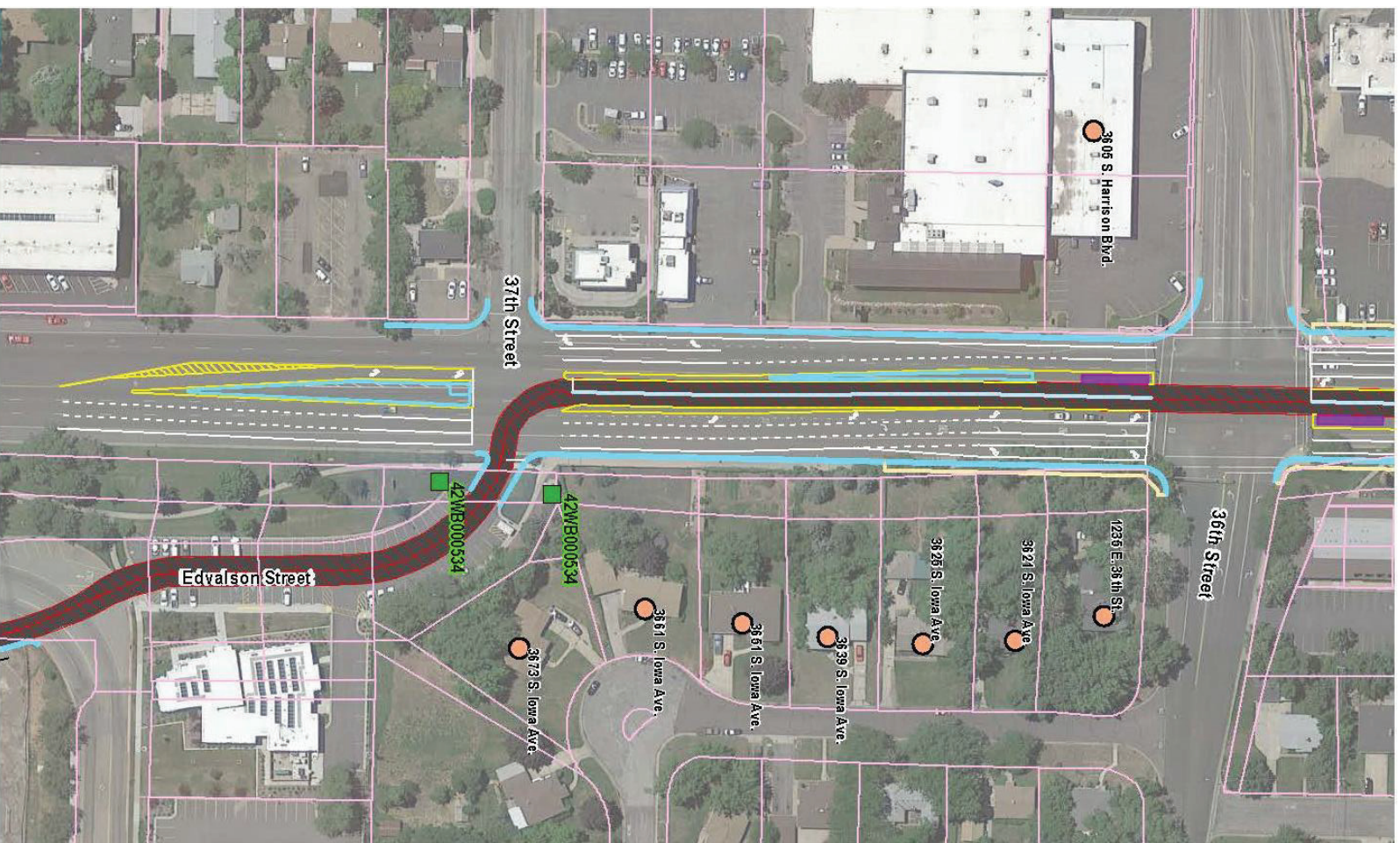
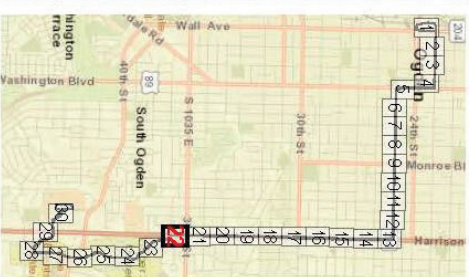




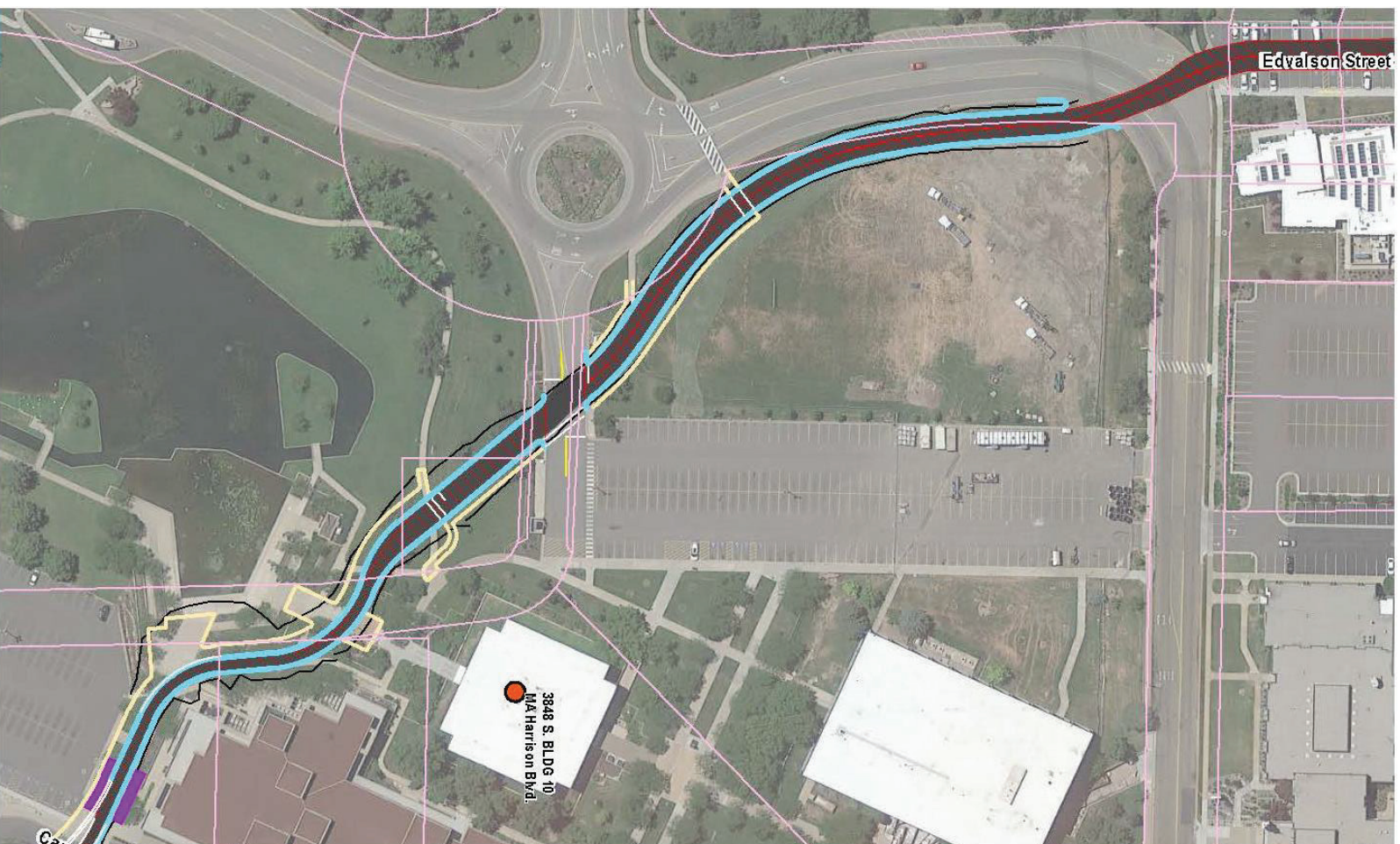
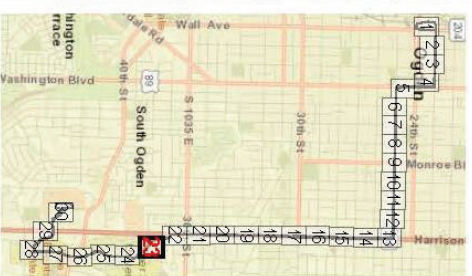
- LEGEND**
- NRHP Eligible Historic Buildings**
- No Effect
  - No Adverse
  - Adverse Effect
- Archaeological Sites**
- Listed on NRHP
  - Eligible
  - Eligible
  - Ineligible
- Design Features**
- Approximate Cut/Fill Line
  - Curb and Gutter
  - Bus - Only Travel Lane
  - Mixed Flow
  - Sidewalk
  - Station Platform
  - Pavement
- Parcel Boundary**



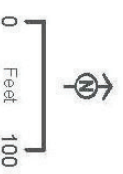








- LEGEND**
- NRHP Eligible Historic Buildings**
- No Effect
  - No Adverse
  - Adverse Effect
- Archaeological Sites**
- Listed on NRHP
  - Eligible
  - Eligible
  - Ineligible
- Design Features**
- Approximate Cut/Fill Line
  - Curb and Gutter
  - Bus - Only Travel Lane
  - Mixed Flow
  - Sidewalk
  - Station Platform
  - Pavement
- Parcel Boundary**



**HJR**

**OGDEN/WEBER STATE UNIVERSITY TRANSIT PROJECT  
HISTORIC PROPERTIES**

FIGURE 23 OF 30